

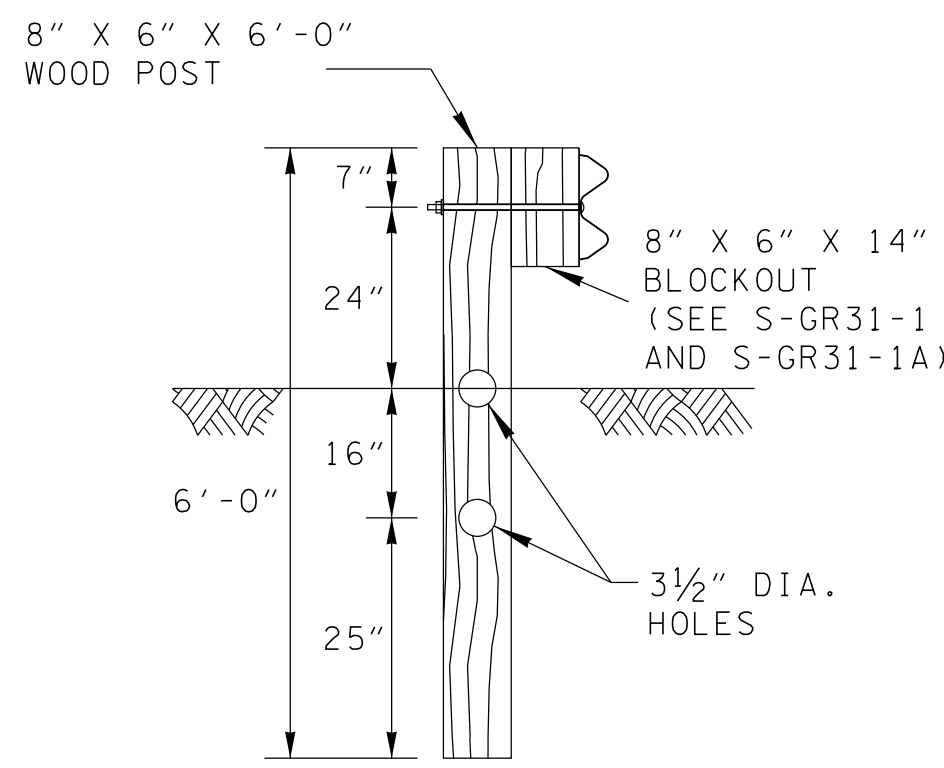
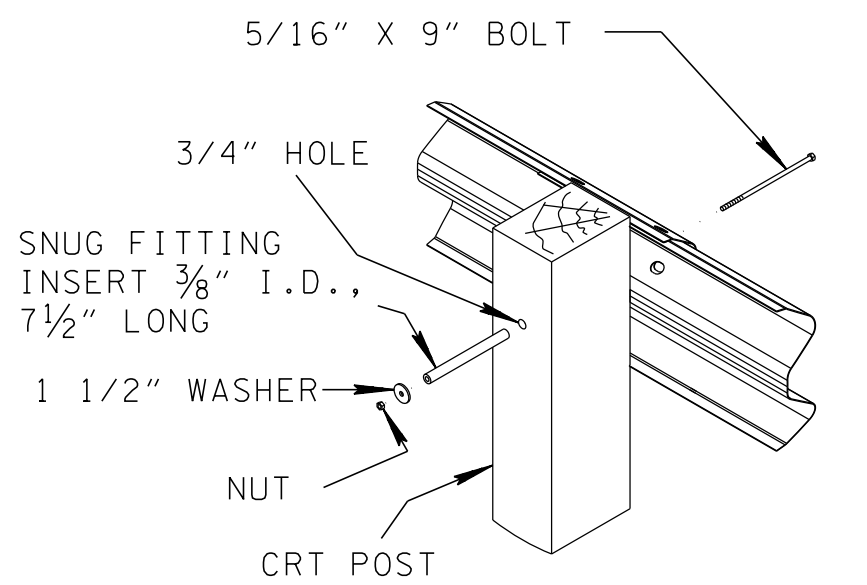
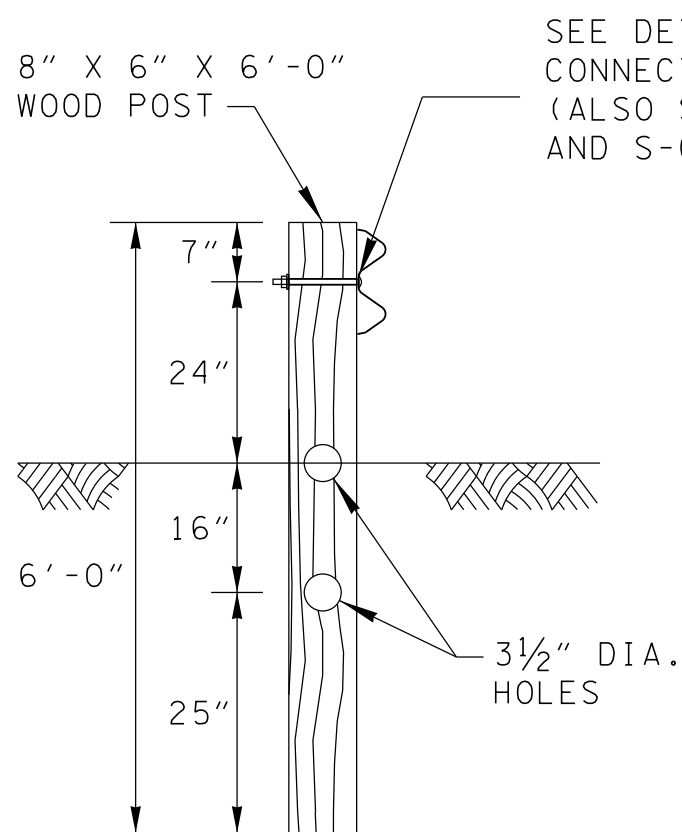
TABLE A

POST AND CLEAR AREA REQUIREMENTS			
GUARDRAIL RADIUS	NUMBER OF CRT POSTS	CLEAR AREA	
		L	W
(F) 8'-6"	5	30'	15'
17'-0"	6	30'	15'
25'-6"	8	40'	20'
35'-0"	11	50'	20'

TABLE B

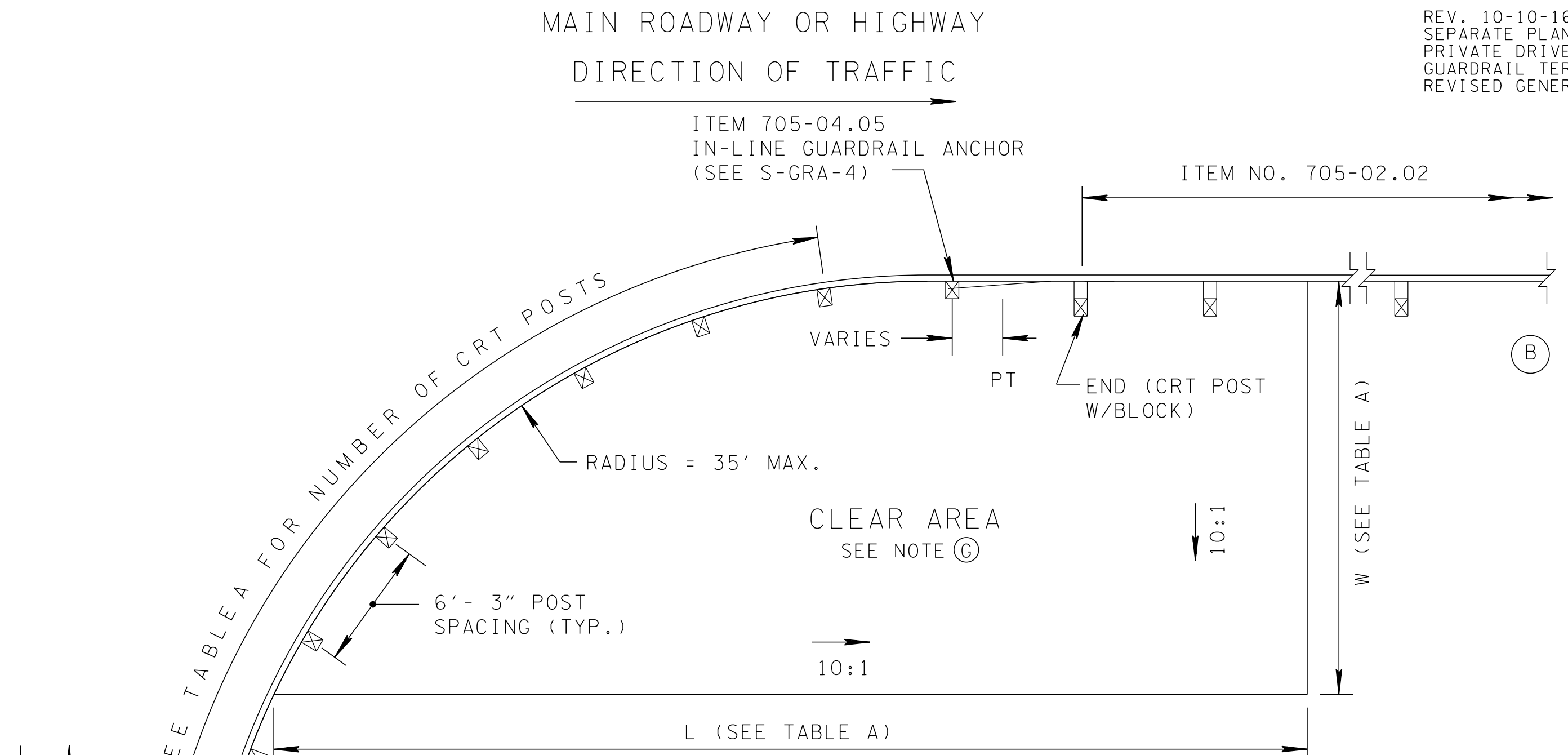
ESTIMATED QUANTITIES FROM BEGINNING POINT TO END			
RADIUS	705-02.02	705-04.05	
(F) 8'-6"	37'-6"	1 *	
17'-0"	50'-0"	1 *	
25'-6"	62'-6"	1 *	
35'-0"	75'-0"	1 *	

\* IF GUARDRAIL CONTINUES BEYOND POST 1, SEE NOTE (E)



SPECIAL CRT POST NOTES

- FEWER CRT POSTS ARE REQUIRED FOR SMALLER RADII; INCLUDE CRT POST AT POINT B. ATTACH GUARDRAIL TO POST WITH A 5/16" X 9" LONG BOLT, A 3/8" X 7 1/2" SNUG FITTING INSERT AND A 1 1/2" WASHER WITH NUT ON BACK OF POST.
- THE FLAT WASHER IS USED UNDER THE NUT, BEHIND THE POST ONLY. NO WASHER IS USED AT THE RAIL.



NOTE TO DESIGNER

THIS STANDARD TO BE USED ON ROADWAYS ON THE NATIONAL HIGHWAY SYSTEM. FOR NON NATIONAL HIGHWAY SYSTEM FACILITIES, USE S-GRA-4.

GENERAL NOTES

- (A) THIS STANDARD DRAWING IS TO BE USED WHEN THE LENGTH OF NEED EXTENDS TO OR BEYOND AN INTERSECTION. DESIGNER IS TO VERIFY THAT THE ENTIRE LENGTH CAN BE CONSTRUCTED WITHIN THE PROPOSED RIGHT-OF-WAY. FOR INSTALLATION WHERE GUARDRAIL RADIUS IS NOT INCLUDED IN TABLE A, ROUND UP. FOR INSTALLATION WHERE GUARDRAIL RADIUS IS LARGER THAN 35 FEET, USE STANDARD INSTALLATION PER S-GR31-1.
- (B) IF CONNECTING TO BRIDGE RAIL OR OTHER CONCRETE BARRIER, SEE S-GRC-1 FOR MINIMUM LENGTH OF TRANSITION SECTION BETWEEN GUARDRAIL AND RIGID WALL.
- (C) THE FORESLOPE FROM THE EDGE OF THE SHOULDER INTO THE FACE OF GUARDRAIL SHOULD NOT BE STEEPER THAN 10(H):1(V).
- (D) SEE S-GR31-1 AND S-GR31-1A FOR POSTS, RAIL, AND HARDWARE STANDARDS FOR CONSTRUCTION.
- (E) USE APPROPRIATE END TERMINAL PER STANDARD DRAWINGS:  
FOR SIDEROADS > 45 MPH, USE S-GRT-2  
FOR SIDEROADS < 45 MPH, USE S-GRT-3  
FOR DRIVES, USE S-GRT-4
- (F) DO NOT CONNECT RAIL TO CENTER POST IN CURVE FOR 8'-6" RADIUS DESIGN.
- (G) THE CLEAR AREA BEHIND THE GUARDRAIL SHALL REMAIN UNOBSTRUCTED AND UNENCUMBERED TO ALLOW THE GUARDRAIL TO FUNCTION PROPERLY. OBSTACLES (I.E., ENDWALLS, SIGNS, DITCHES, ETC.) WITHIN THIS AREA MUST BE REMOVED, RELOCATED, OR REDESIGNED.
- (H) W-BEAMS SHALL BE SHOP BENT AS REQUIRED.
- (I) TO DETERMINE IF A ROAD IS ON THE NATIONAL HIGHWAY SYSTEM, CONSULT THE FUNCTIONAL CLASSIFICATION MAPS MAINTAINED BY THE TDOT LONG RANGE PLANNING DIVISION. SEE TDOT LONG RANGE PLANNING WEBSITE.
- (J) THE CURVED GUARDRAIL INSTALLATION SHOWN ON THIS STANDARD DRAWING HAS BEEN EVALUATED PER NCHRP 350 TL-2.
- (K) PAYMENT FOR TYPICAL INSTALLATION WILL BE UNDER ITEM NUMBERS:  
705-02.02 SINGLE GUARDRAIL (TYPE 2) PER LF  
705-04.03 GUARDRAIL TERMINAL (TYPE 13) PER EACH OR  
705-04.04 GUARDRAIL TERMINAL (TYPE 21) PER EACH OR  
705-04.05 GUARDRAIL TERMINAL (TYPE-IN-LINE) PER EACH  
705-04.07 TAN ENERGY ABSORBING TERM (NCHRP 350, TL3) PER EACH
- (L) FOR RADIUS LESS THAN OR EQUAL TO 150', USE ITEM NO. 706-06.06 INSTEAD OF ITEM NO. 705-02.02.

STATE OF TENNESSEE  
DEPARTMENT OF TRANSPORTATION

SAFETY PLAN  
AT SIDEROADS  
OR  
PRIVATE DRIVES

MINOR REVISION -- FHWA  
APPROVAL NOT REQUIRED.

7-11-13

S-PL-2